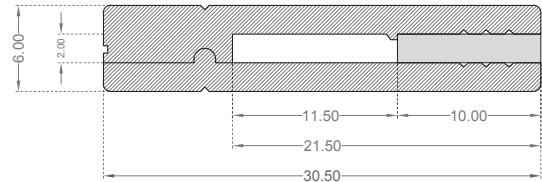


LED Strip Mounting Profile

Sideline

Features

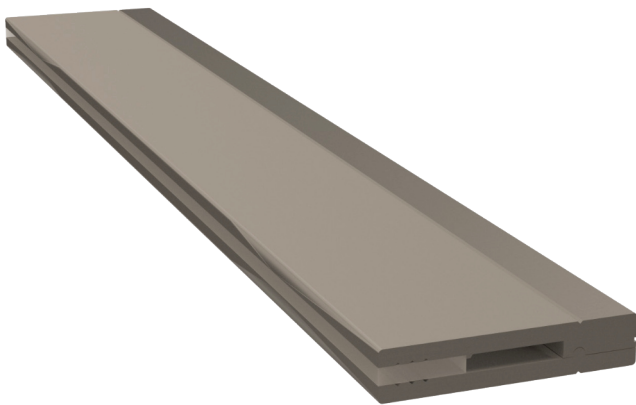
- 30mm rectangle profile, 6mm deep
- Diffuser Options: #Opal
- Available lengths: 1 m
- Profile is designed to emit a narrow beam of light sideways.
- Aluminium profile with diffuser. Designed for mounting side-emitting LED strip up to 10mm width.
- Channels on the sides of the profile allow you to clip the profile into metal clips.



Technical

Recommended LED

- For use with side-emitting LED Strips



axl . p 30 rect 6 . s10

maker profile width (mm) profile depth (mm)
 profile profile shape: corner max strip width (mm)

Note: Please quote the full product code while placing the order.