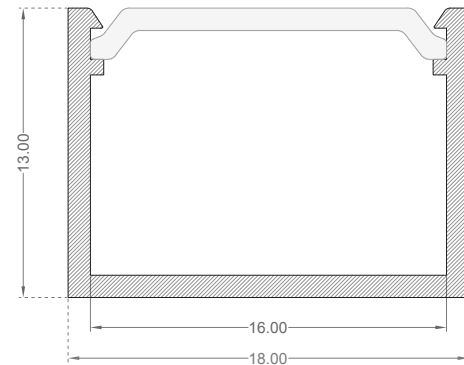


LED Strip Mounting Profile

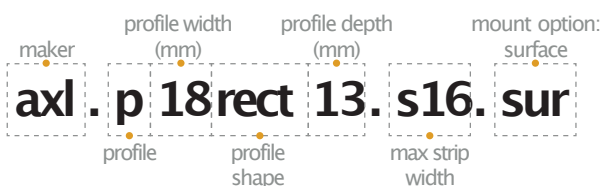
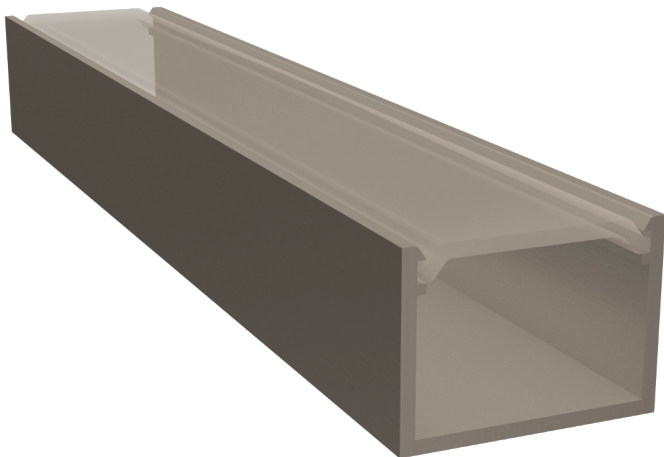
Mod Surface

Features

- 18mm rectangle section, 13mm deep
- Mount Options: #Surface #Recess
- Diffuser Options: #Opal #Clear
- Available lengths: 1m, 2m
- Aluminium profile with snap-fit diffuser. Designed for mounting LED strip up to 16mm width.
- Channels on the sides of the profile allow you to clip the profile into metal clips.
- Plastic end caps come in pairs. One having a hole for the wires to pass through.

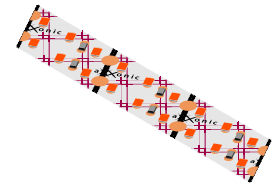


Technical

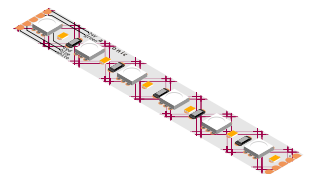


Recommended LED

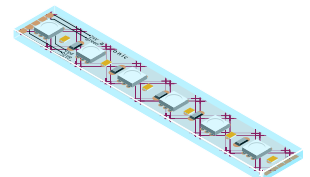
axl.fs12.dr300w-14W



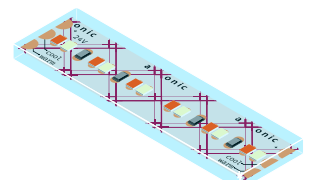
axl.fs12.144rgbw-11W



axl.fs14.144rgbw-11W



axl.fs14.240ww-14W



Note: Please quote the full product code while placing the order.