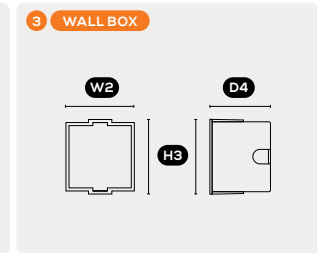
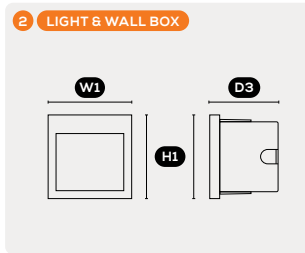
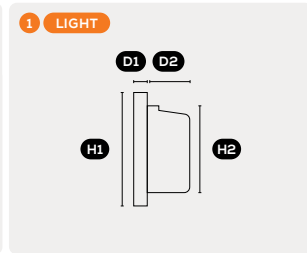
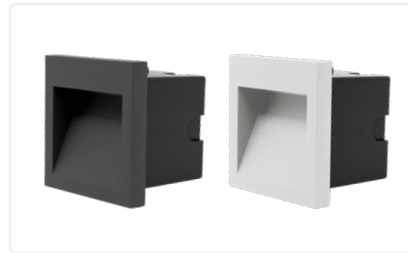


# STEP SQUARE

Our Step wall lights are modern luminaires that provide subtle light; perfect for stairs and hallways. With an IP rating of 54, they are suitable for both internal and external lighting applications.

- IP 54 – Suitable for indoor & outdoor applications.
- 90° beam angle – Perfect for step lighting.
- PVC wall box included for easy installation.
- 2 finishes – White, & anthracite.



<b>1 DIMENSIONS</b>	<b>H1</b> 90 x 90 mm	<b>H2</b> 78 x 78mm	<b>D1</b> 10 mm	<b>D2</b> 35mm
<b>2 DIMENSIONS</b>	<b>H1</b> <b>W1</b> 90 mm	<b>D3</b> 70mm		
<b>3 DIMENSIONS</b>	<b>H3</b> <b>W2</b> 85 mm	<b>D4</b> 60mm		
<b>1 CUTOUT</b>	<b>H</b> 75mm	<b>W</b> 80mm		
<b>2 3 CUTOUT</b>	<b>H</b> 80 x 80 mm			

## LUMINAIRE OPTIONS

### FINISHES

- WHITE  ANTHRACITE

## GENERAL SPECIFICATIONS

<b>LED</b>	<b>LUMENS</b> (3000K   4000K)
3W	105 lm   110 lm
<b>EFFICACY</b>	Up to 12 Lm/W
<b>COLOUR</b>	3000K, Warm White 4000K, Cool White
<b>MATERIAL</b>	Aluminium   Glass   PVC
<b>BEAM</b>	90°
<b>CRI</b>	80+
<b>IP</b>	54
<b>COLOUR DEVIATION</b>	SDCM ≤3
<b>LIFETIME</b>	> 55,000hrs L80B10
<b>WARRANTY</b>	3 Years

This fitting is not recommended for coastal areas.

## DRIVER SPECIFICATIONS

<b>POWER</b>	350mA 240V Built-In Dimmable Driver
<b>DIMMING</b>	Non Dimming
<b>POWER FACTOR</b>	> 0.90

## PROJECT DETAILS

### PROJECT

### TYPE

### NOTES

## PRODUCT CODES

Square, White, 3000K	<b>11-ST3W3</b>
Square, White, 4000K	<b>11-ST3W4</b>
Square, Anthracite, 3000K	<b>11-ST3A3</b>
Square, Anthracite, 4000K	<b>11-ST3A4</b>

