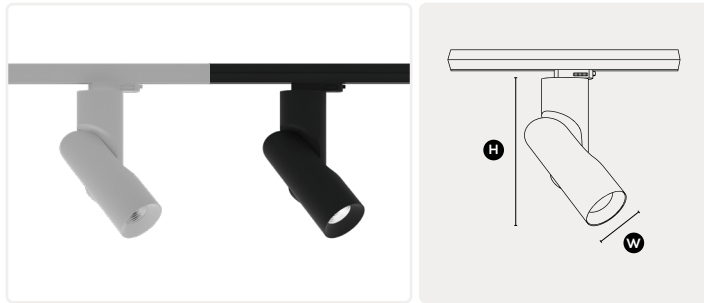


# SPLIT TRACK

Highly adaptable, the SPLIT TRACK is the perfect design solution. Paired together or used individually, the Split Track has a modern design aesthetic that fits seamlessly into any interior space.

- Innovating rotating lens head.
- High quality aluminium housing.
- Light any surface – Adjustable up to 60°, with 350° rotation.
- Discreet lock-in mount, complimenting its minimalist design.



**DIMENSIONS**      **W** Ø65mm   **H** 200mm

## LUMINAIRE OPTIONS

### BEAM OPTIONS

50° **STANDARD**   36°   25°

### FINISHES

WHITE    BLACK

### BAFFLE FINISHES

WHITE    BLACK    GOLD

### LENS OPTION

CLEAR   **STANDARD**    HONEYCOMB

## GENERAL SPECIFICATIONS

**LED**      **LUMENS** (3000K | 4000K)

12W      1255 lm | 1320 lm

**EFFICACY**      Up to 110 Lm/W

**COLOUR**      3000K, Warm White  
4000K, Cool White

**MATERIAL**      Powder Coated Material

**CRI**      90+

**IP**      20

**COLOUR DEVIATION**      SDCM ≤3

**UGR**      <19

**LIFETIME**      > 55,000hrs L80B10

**WARRANTY**      5 Years

## DRIVER SPECIFICATIONS

**POWER**      350mA 240V  
Built-In Driver

**DIMMING**      Phase Cut Dimming

**POWER FACTOR**      > 0.90

**REMOTE DALI DIMMING AVAILABLE UPON REQUEST**

## PROJECT DETAILS

### PROJECT

### TYPE

### NOTES

## PRODUCT CODES

White, 3000K, 50°      **83-SPT12W503**

White, 4000K, 50°      **83-SPT12W504**

Black, 3000K, 50°      **83-SPT12B503**

Black, 4000K, 50°      **83-SPT12B504**

## ACCESSORIES

36° Reflector      **83-RFL36**

24° Reflector      **83-RFL25**

Honeycomb Lens      **83-AIRH**


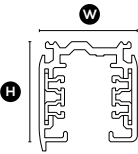
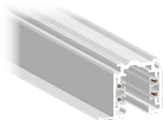
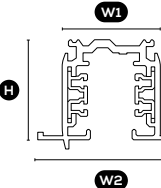

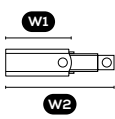

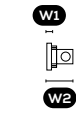

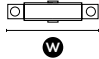

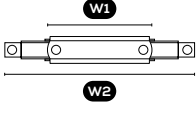
White Baffle      **83-SPLITRW**

Black Baffle      **83-SPLITRB**

Gold Baffle      **83-SPLITRG**



## 3 CIRCUIT TRACK COMPONENTS

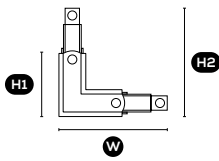
3 Circuit Track Piece	DESCRIPTION	FINISHES	PRODUCT CODE
 	<p>3 circuit track, available in 1m or 2m lengths.</p> <p>H 32.5mm W 31.5mm</p>	<ul style="list-style-type: none"> <li><span style="display: inline-block; width: 10px; height: 10px; background-color: #f0f0f0; margin-right: 5px;"></span> 1m, White</li> <li><span style="display: inline-block; width: 10px; height: 10px; background-color: #333; margin-right: 5px;"></span> 1m, Black</li> <li><span style="display: inline-block; width: 10px; height: 10px; background-color: #f0f0f0; margin-right: 5px;"></span> 2m, White</li> <li><span style="display: inline-block; width: 10px; height: 10px; background-color: #333; margin-right: 5px;"></span> 2m, Black</li> </ul>	<ul style="list-style-type: none"> <li>83-3C1MW</li> <li>83-3C1MB</li> <li>83-3C2MW</li> <li>83-3C2MB</li> </ul>
 	<p>3 circuit recessed track, available in 1m or 2m lengths.</p> <p>H 32.5mm W1 31.5mm W2 56mm</p>	<ul style="list-style-type: none"> <li><span style="display: inline-block; width: 10px; height: 10px; background-color: #f0f0f0; margin-right: 5px;"></span> 1m, White</li> <li><span style="display: inline-block; width: 10px; height: 10px; background-color: #333; margin-right: 5px;"></span> 1m, Black</li> <li><span style="display: inline-block; width: 10px; height: 10px; background-color: #f0f0f0; margin-right: 5px;"></span> 2m, White</li> <li><span style="display: inline-block; width: 10px; height: 10px; background-color: #333; margin-right: 5px;"></span> 2m, Black</li> </ul>	<ul style="list-style-type: none"> <li>83-3CR1MW</li> <li>83-3CR1MB</li> <li>83-3CR2MW</li> <li>83-3CR2MB</li> </ul>
 	<p>The feed piece connects at the start of the track and supplies power to the entire track configuration.</p> <p>W1 66mm W2 105mm</p>	<ul style="list-style-type: none"> <li><span style="display: inline-block; width: 10px; height: 10px; background-color: #f0f0f0; margin-right: 5px;"></span> White</li> <li><span style="display: inline-block; width: 10px; height: 10px; background-color: #333; margin-right: 5px;"></span> Black</li> </ul>	<ul style="list-style-type: none"> <li>83-3CFPW</li> <li>83-3CFPB</li> </ul>
 	<p>The dead end connects at the end of the track and completes the track with a clean finish.</p> <p>W1 3mm W2 21mm</p>	<ul style="list-style-type: none"> <li><span style="display: inline-block; width: 10px; height: 10px; background-color: #f0f0f0; margin-right: 5px;"></span> White</li> <li><span style="display: inline-block; width: 10px; height: 10px; background-color: #333; margin-right: 5px;"></span> Black</li> </ul>	<ul style="list-style-type: none"> <li>83-3CDEW</li> <li>83-3CDEB</li> </ul>
 	<p>The straight connector joins two separate pieces of track together.</p> <p>W 68mm</p>	<ul style="list-style-type: none"> <li><span style="display: inline-block; width: 10px; height: 10px; background-color: #f0f0f0; margin-right: 5px;"></span> White</li> <li><span style="display: inline-block; width: 10px; height: 10px; background-color: #333; margin-right: 5px;"></span> Black</li> </ul>	<ul style="list-style-type: none"> <li>83-3CSCW</li> <li>83-3CSCB</li> </ul>
 	<p>The straight connector feed connects in the middle of two track pieces and supplies power to the entire track configuration. You can use a straight connector feed instead of a regular feed piece.</p> <p>W1 100mm W2 166mm</p>	<ul style="list-style-type: none"> <li><span style="display: inline-block; width: 10px; height: 10px; background-color: #f0f0f0; margin-right: 5px;"></span> White</li> <li><span style="display: inline-block; width: 10px; height: 10px; background-color: #333; margin-right: 5px;"></span> Black</li> </ul>	<ul style="list-style-type: none"> <li>83-3CSFW</li> <li>83-3CSFB</li> </ul>

**Please Note:**

3 circuit recessed track is configured using the same components as the standard 3 circuit track. However in addition to this, cover plates are required. Please get in touch with one of our design consultants for more information.

## 3 CIRCUIT TRACK COMPONENTS

### Corner Connector



#### DESCRIPTION

The corner connector is used to connect two pieces of track in a corner configuration. These pieces are available in both right and left configurations. A corner connector can also provide power to the track.

H2 W 99mm H1 66mm

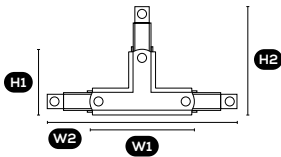
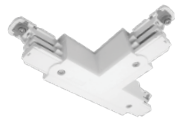
#### FINISHES

- Left, White
- Left, Black
- Right, White
- Right, Black

#### PRODUCT CODE

- 83-3CLCW
- 83-3CLCB
- 83-3CRCW
- 83-3CRCB

### T Connector



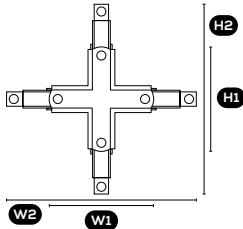
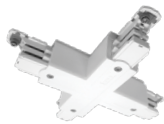
The T Connector is used to connect three pieces of track in a T configuration. The T Connector can also supply power to the track. Available in left and right configurations.

H1 66mm H2 99mm  
W1 100mm W2 166mm

- Left, White
- Left, Black
- Right, White
- Right, Black

- 83-3CTLCW
- 83-3CTLCB
- 83-3CTRCW
- 83-3CTRCB

### Cross Connector



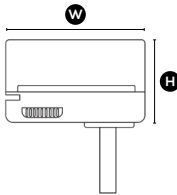
The cross connector is used to connect four pieces of track in a cross configuration. The cross connector also supplies power to the track.

H1 100mm H2 166mm  
W1 100mm W2 166mm

- White
- Black

- 83-3CCCW
- 83-3CCCB

### Adaptor



The adaptor is a clip-in component which comes as standard on every FAZE track fitting. The adaptor is used to connect the luminaire to the track.

The adaptor can carry fittings of 5kg or less.  
H 39mm W 30mm

- White
- Black

- 83-3CCCW
- 83-3CCCB

### Wire Suspension Kit

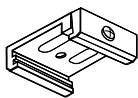


The wire suspension kit is used to suspend the track configuration.

- White
- Black
- Silver

- 83-3CWSUPW
- 83-3CWSUPB
- 83-3CWSUP

### Universal Fixing Piece



The universal fixing piece can be used to mount the track in a fixed position.

- White
- Black

- 83-3CUFW
- 83-3CUFB

#### Please Note:

3 circuit recessed track is configured using the same components as the standard 3 circuit track. However in addition to this, cover plates are required. Please get in touch with one of our design consultants for more information.